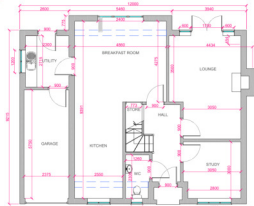




OPTIMUM DESIGN SERVICES



PLOT 3 WEST ELEVATION (FRONT)



PLOT 2 GROUND FLOOR



Architectural Planning Services Ⓞ **Design Management**

Test Fits Ⓞ **Composite Design** Ⓞ **Technical Design**

Space Planning Ⓞ **Internal Survey** Ⓞ **Design Drawings** Ⓞ **Asset Survey** Ⓞ **3D Visuals**

Principal Designer Services

Contents

Small Profile

Optimum **design services Ltd** was launched in July 2000.

Optimum design services provides Surveys, Architectural Planning, 2D space planning, detailed design work, specifying furniture, 3D CGI visuals and animation walkthroughs to help with planning and consultation, on a consultancy basis.

James is proud to announce that this July marked 21 years of Optimum Design Services. He has enjoyed many different projects covering both commercial and domestic premises, providing him with a wealth of experience to share with his clients.

Now the pandemic has changed our lives there has never been a better time to review and improve the way we live and work.

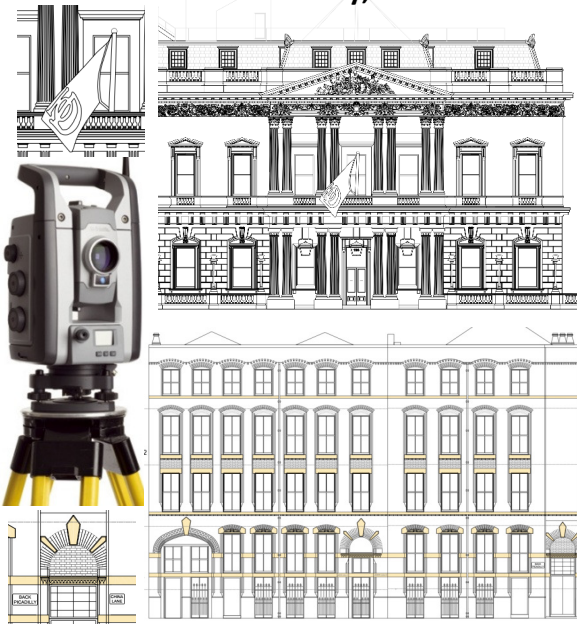
One of the most important aspects of Optimum design services is flexibility for the client. In addition to working from our own office in Southwick, we also have the capacity to work directly with customers either on site or at their own establishment.

We have low overheads which allows us to pass that benefit on to the clients in our quotations.



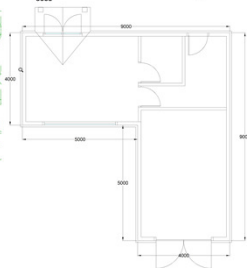
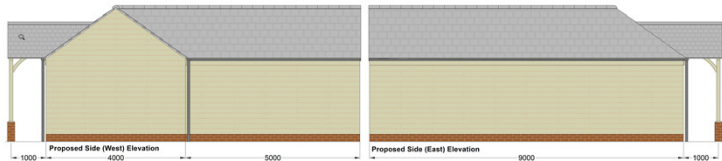
Surveying Services

Internal & External Survey, Also As Built Drawings.....



Architectural Planning Services

Polebrook

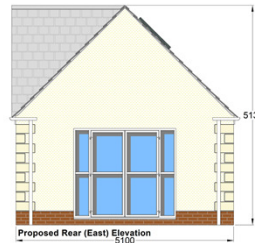
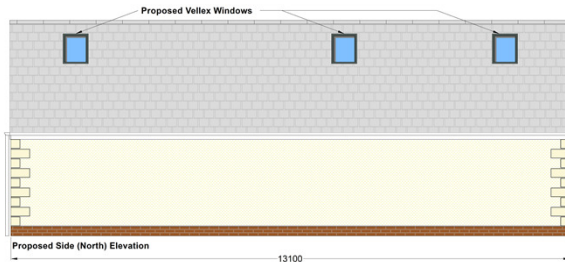
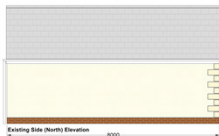
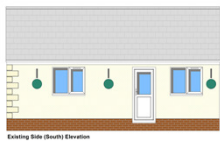


In Planning



Architectural Planning Services

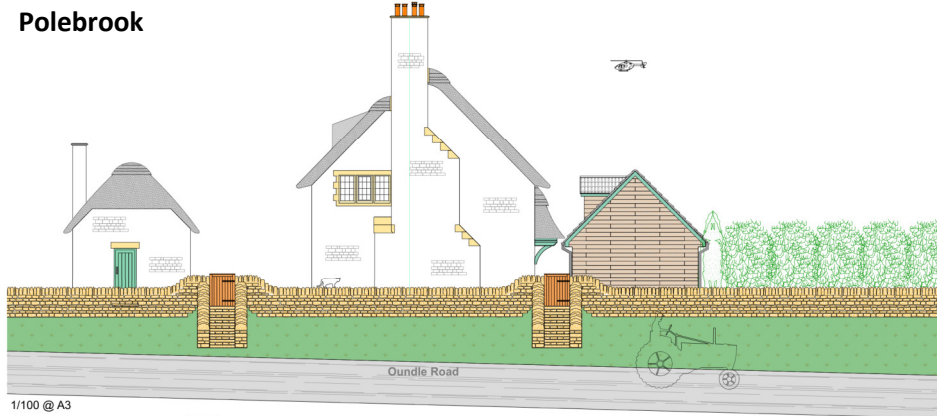
Polebrook



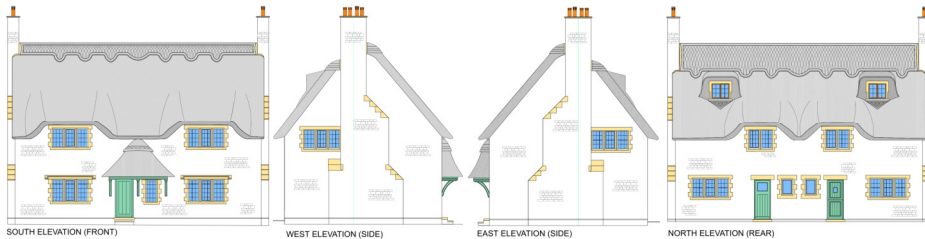
In Planning

Architectural Planning Services

Polebrook



1/100 @ A3



Planning Approved

Architectural Planning Services

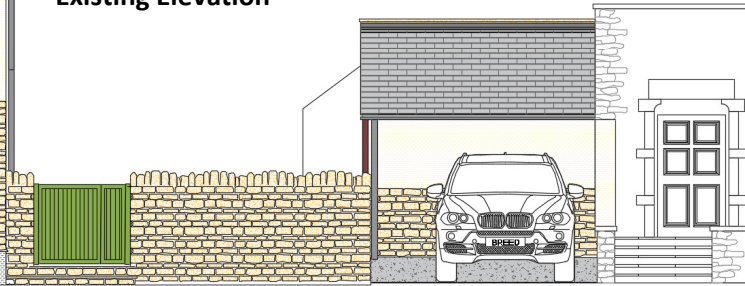
Polebrook



Proposed Elevation



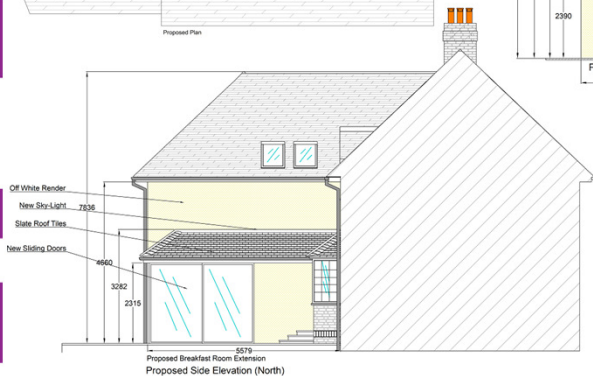
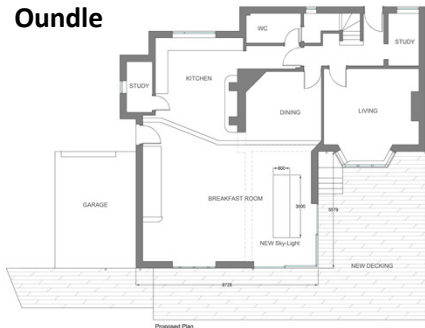
Existing Elevation



In Planning

Architectural Planning Services

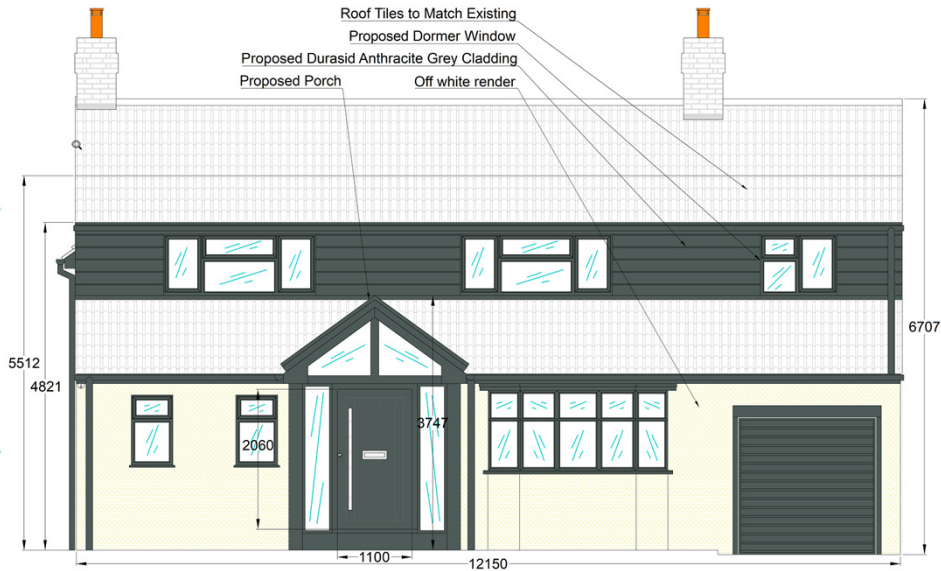
Oundle



Planning Approved

Architectural Planning Services

Oundle



In Planning

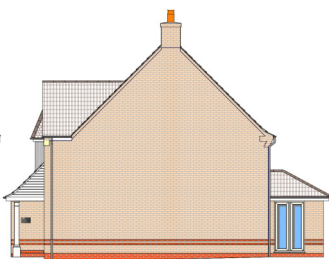


Architectural Planning Services

Thapston



FRONT ELEVATION (NORTH - EAST)



SIDE ELEVATION (NORTH - WEST)



REAR ELEVATION (SOUTH - WEST)



SIDE ELEVATION (SOUTH - EAST)



EXISTING GROUND FLOOR



PROPOSED GROUND FLOOR

In Development



Architectural Planning Services

Cattle Dyke Street View – New Development

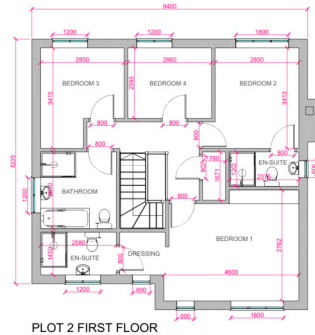
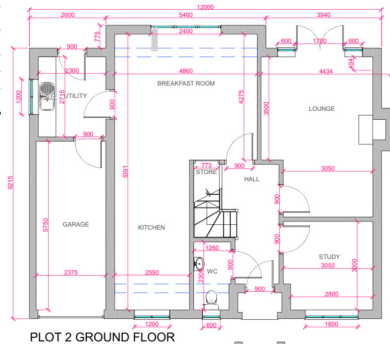


PLOT 1 WEST ELEVATION (FRONT)

PLOT 2 WEST ELEVATION (FRONT)

PLOT 3 WEST ELEVATION (FRONT)

PLOT 4 WEST ELEVATION (FRONT)



Planning Approved



Architectural Planning Services

Rushden



Proposed Cross Section



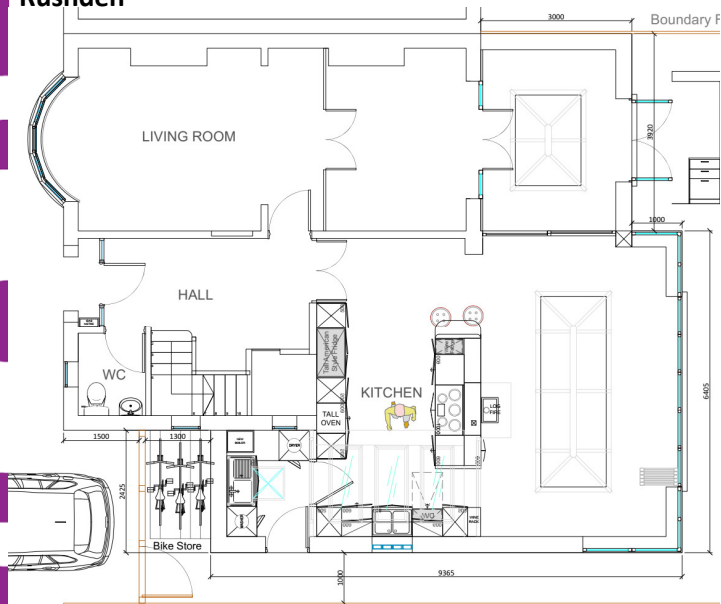
Proposed Rear Elevation

Planning Approved



Architectural Planning Services

Rushden



PROPOSED GROUND FLOOR

IDEAL HOME and GARDEN

July 2020

This week,
upcycling
hints and tips.

Work/life
balance,
is it
achievable?

How to
get red wine
out of a
new sofa.

We look inside
Rushdens most
stylish home.

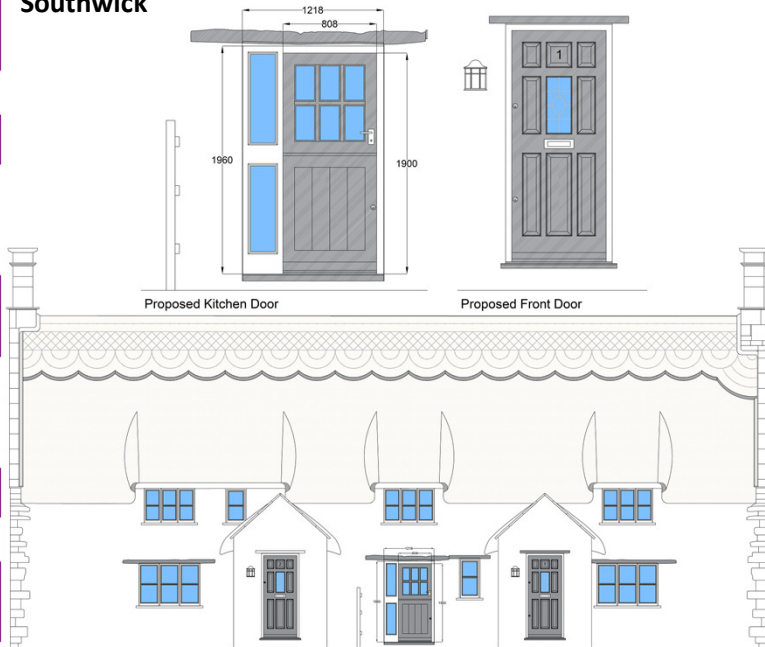
How to
deal with
hormonal
preteens.

Planning Approved



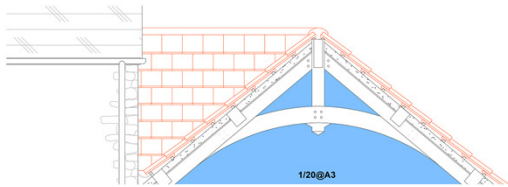
Grade 2 Listed Thatched Cottage Application Granted

Southwick



Architectural Planning Services

Achurch

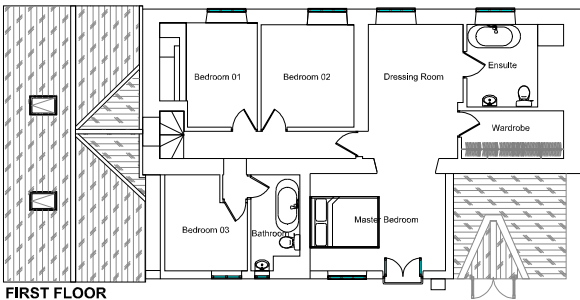
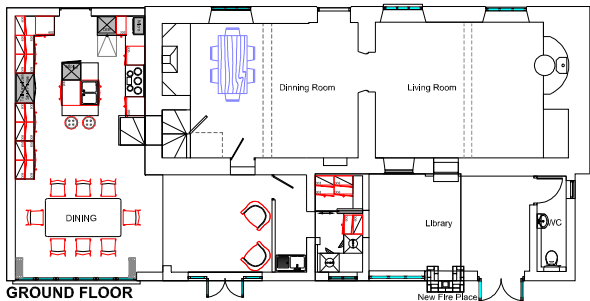


Planning Approved



Architectural Planning Services

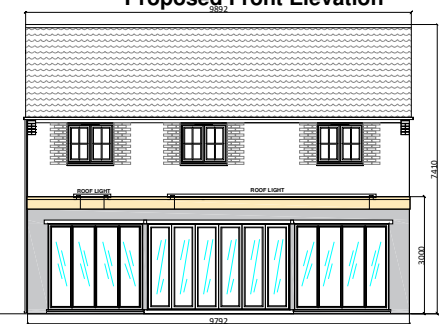
Achurch



Architectural Planning Services



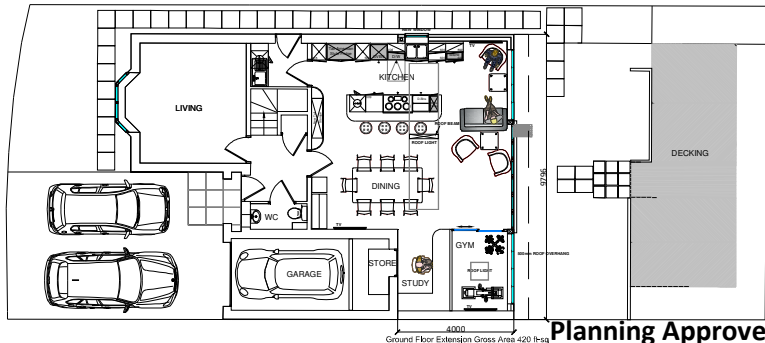
Proposed Front Elevation



Proposed Rear Elevation



Creed Road, Oundle



Planning Approved

The Old Oundle Brewery

Main Brewery Building South & East Elevations



Planning Approved

The Old Oundle Brewery



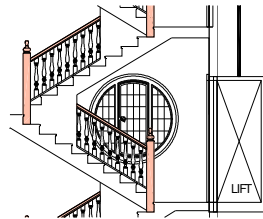
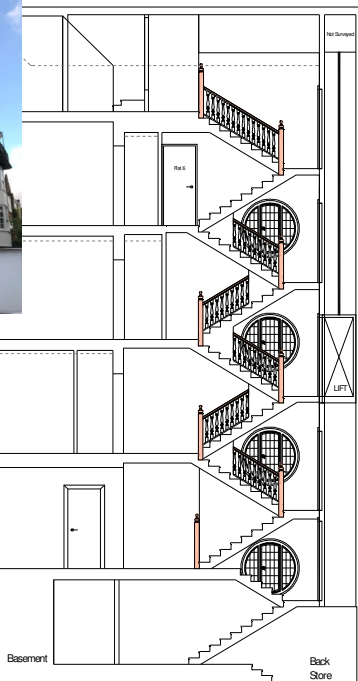
Mulberry Walk Chelsea



Rat 4
Second Floor

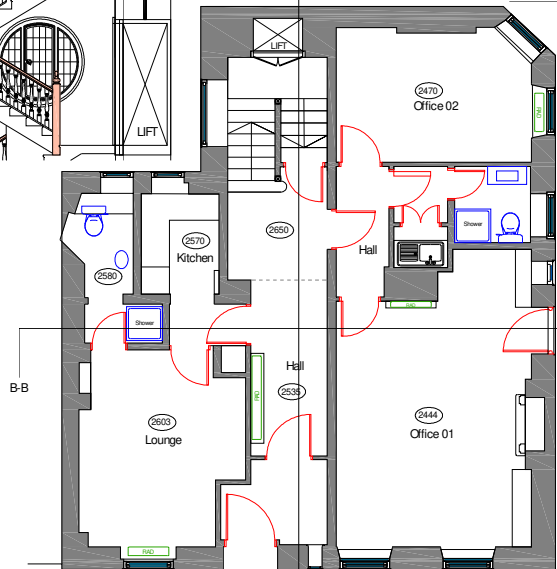
Rat 3
First Floor

Ground Floor



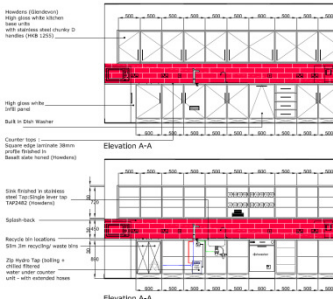
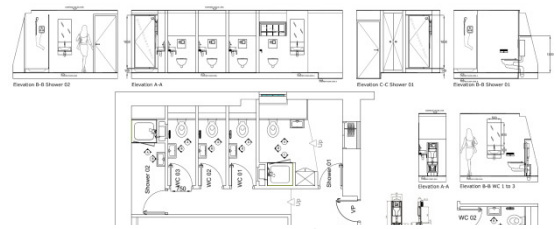
Mulberry Walk, Chelsea

A-A



Planning Approved





Architectural Planning Services

Planning Application Drawing

Listed Building Consent

Test Fits Drawings

Land-registry 'Act 2002' Compliant Drawings

Commercial Asset Management Services

Space Planning

Detailed Presentation Design Drawings

Construction Drawings

Detailed Furniture & Storage Audits

As Build Survey & Drawings

3D Visuals (CGI's)

3D Animation Walkthrough's

Principal Designer CDM 2015

Design Management

Client List

Direct Clients



South East Coast
Ambulance Service
NHS Foundation Trust



Walsall Council

Property Clients



Design & Build Clients



MARIS



bluu



Covid-19 Safety Plan



Covid-19 Safety Plan

James & Jacqueline Walker had their vaccinations on the 09.03.21 and 20.05.21.

A rapid lateral flow test will be undertaken before attending any site.

Hand-sanitiser and mask wearing will be used in all survey work.

Safety is a priority for us and our clients.



Founded 2000



James Walker

Optimum Design Services Ltd
1 Museum Cottage,
Main Street,
Southwick,
Peterborough,
PE8 5BL,



All Enquiries To

01832 274577

m. 07967 272 668

jameswalker@optimumdesignservices.co.uk

www.optimumdesignservices.co.uk

Brochure designed By Optimum design services & Printed By www.printmarshall.co.uk

